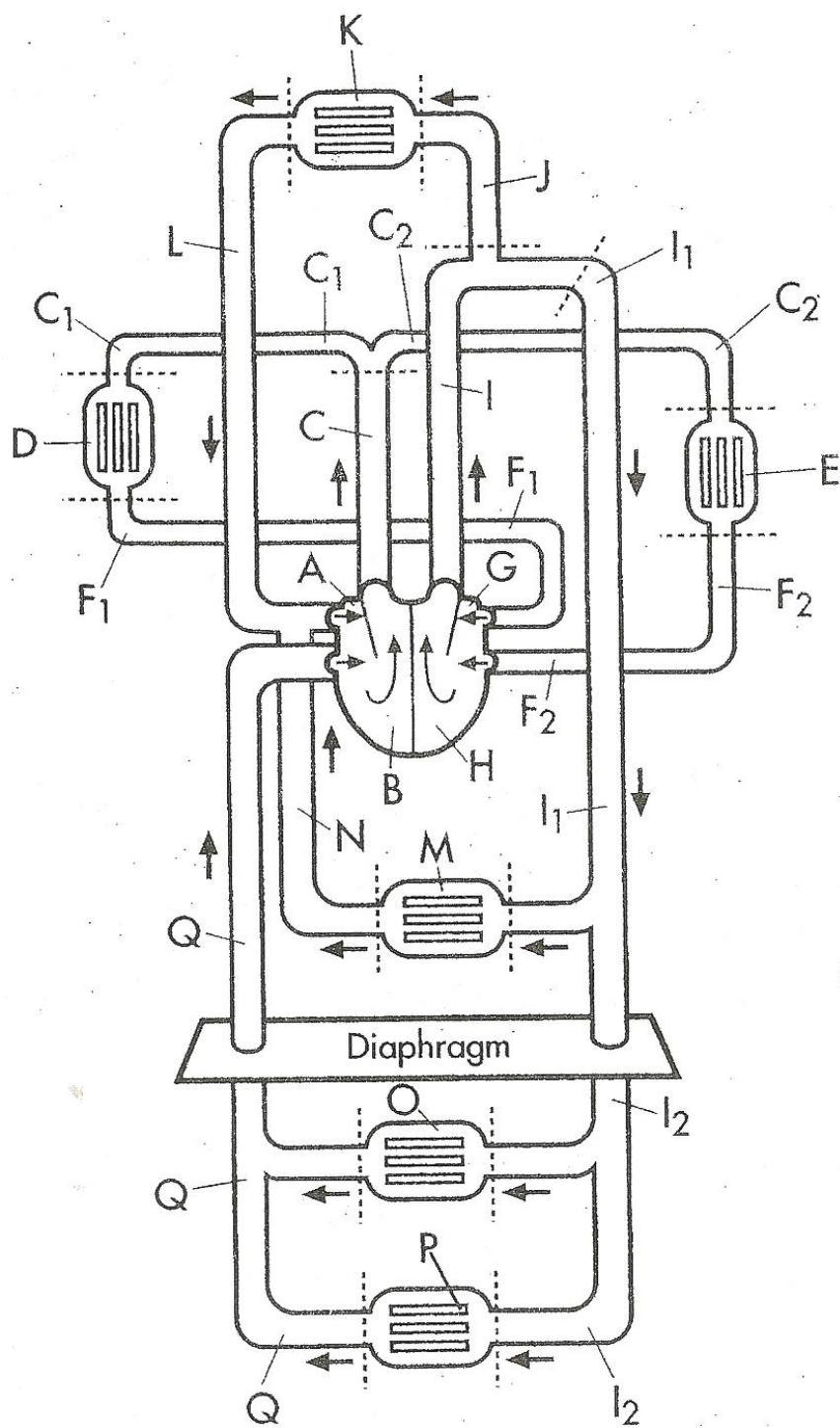
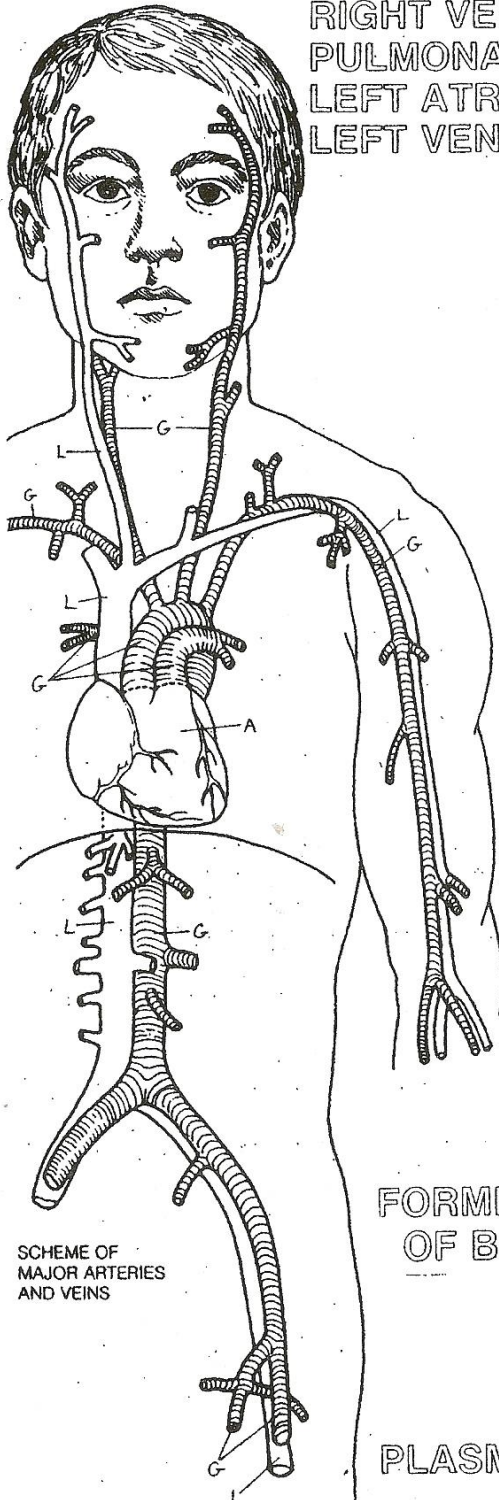


# SCHEMATIC OF THE CIRCULATORY SYSTEM



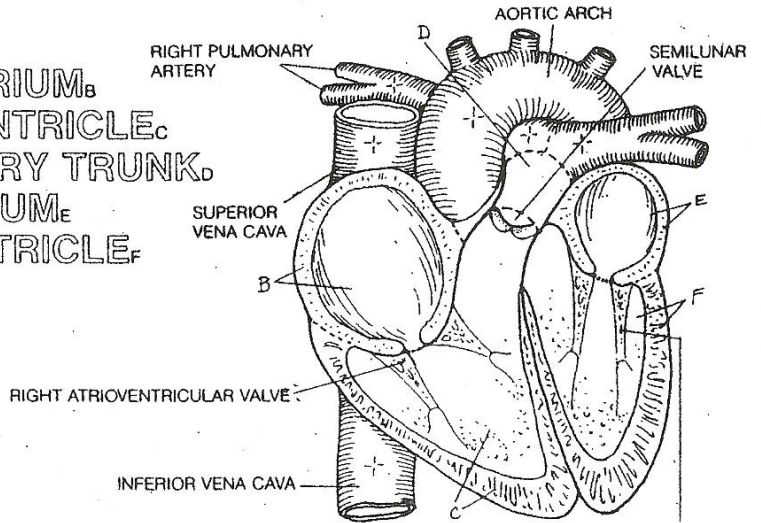
Right atrium	A	<input type="radio"/>
Right ventricle	B	<input type="radio"/>
Pulmonary trunk	C	<input type="radio"/>
Left pulmonary artery	C <sub>1</sub>	<input type="radio"/>
Right pulmonary artery	C <sub>2</sub>	<input type="radio"/>
Right lung	D	<input type="radio"/>
Left lung	E	<input type="radio"/>
Left pulmonary vein	F <sub>1</sub>	<input type="radio"/>
Right pulmonary vein	F <sub>2</sub>	<input type="radio"/>
Left atrium of the heart	G	<input type="radio"/>
Left ventricle	H	<input type="radio"/>
Aorta	I	<input type="radio"/>
Thoracic aorta	I <sub>1</sub>	<input type="radio"/>
Abdominal aorta	I <sub>2</sub>	<input type="radio"/>
Carotid arteries	J	<input type="radio"/>
Upper extremities	K	<input type="radio"/>
Superior vena cava	L	<input type="radio"/>
Thoracic organs	M	<input type="radio"/>
Azygous veins	N	<input type="radio"/>
Visceral organs	O	<input type="radio"/>
Lower extremities	P	<input type="radio"/>
Inferior vena cava	Q	<input type="radio"/>

# CARDIOVASCULAR SYSTEM.

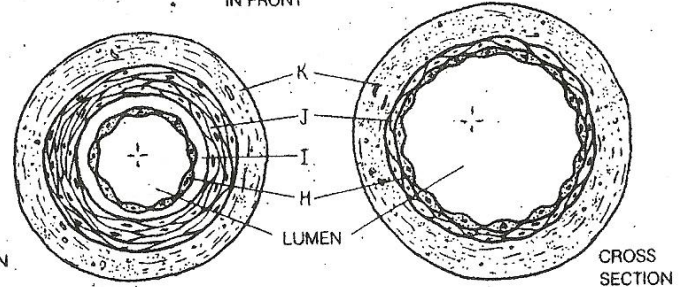


SCHEME OF MAJOR ARTERIES AND VEINS

HEART<sup>A</sup>  
 RIGHT ATRIUM<sup>B</sup>  
 RIGHT VENTRICLE<sup>C</sup>  
 PULMONARY TRUNK<sup>D</sup>  
 LEFT ATRIUM<sup>E</sup>  
 LEFT VENTRICLE<sup>F</sup>



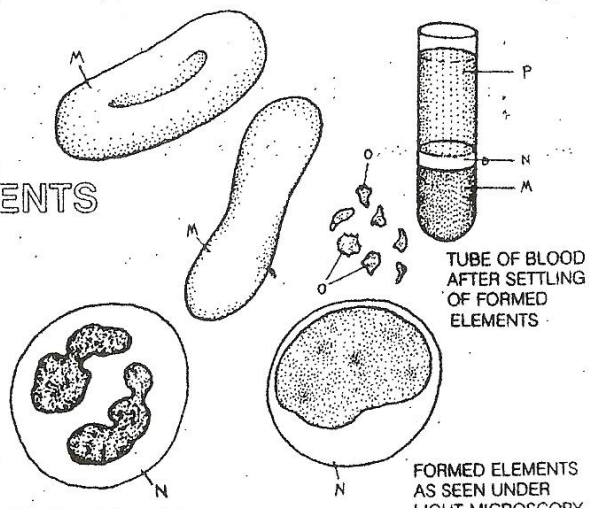
DIAGRAMMATIC VIEW OF INTERIOR OF HEART FROM IN FRONT  
 LEFT ATRIOVENTRICULAR VALVE



CROSS SECTION ARTERY VEIN CROSS SECTION

ARTERY: VEIN.  
 EPITHELIAL CELLS<sup>H</sup>  
 SMOOTH MUSCLE/  
 FIBROUS CONNECTIVE TISSUE<sup>K</sup>

FORMED ELEMENTS OF BLOOD\*



PLASMA<sup>P</sup>  
 RED BLOOD CELLS<sup>M</sup>  
 WHITE BLOOD CELLS<sup>N</sup> PLATELETS<sup>O</sup>